



# LEROO LA TAU

*Makgadikgadi Pans National Park*



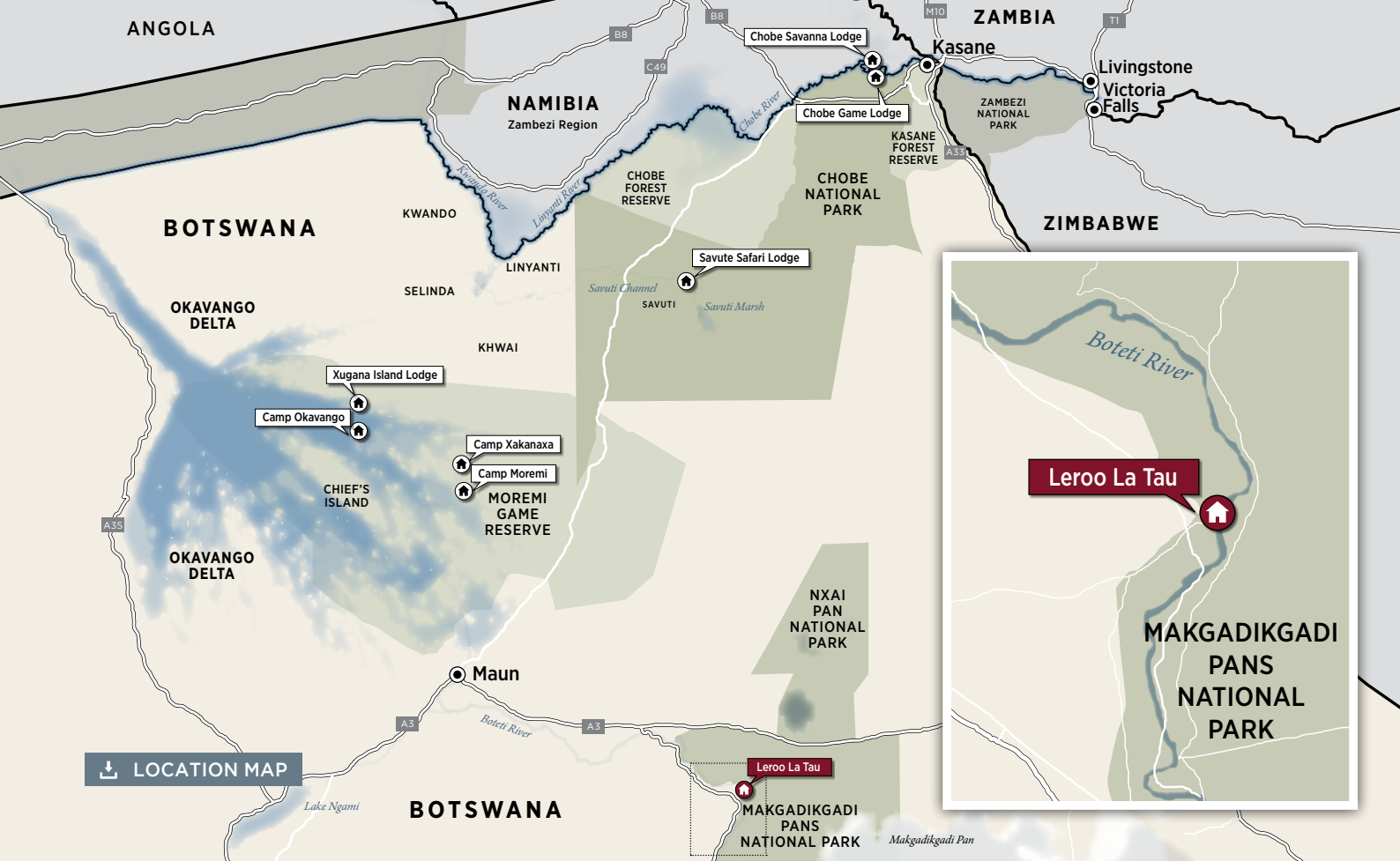
*Empowering Botswana Through Tourism*

CAMP OKAVANGO | XUGANA ISLAND LODGE | CAMP MOREMI | CAMP XAKANAXA  
CHOBE GAME LODGE | SAVUTE SAFARI LODGE | CHOBE SAVANNA LODGE | LEROO LA TAU



[www.desertdelta.com](http://www.desertdelta.com)

08 DECEMBER 2020



LOCATION MAP

*Leroo La Tau is situated on the western bank of the Boteti River, northwest of Khumaga Village and about 140 kilometers southeast of Maun. The eastern bank of the Boteti forms the boundary of the Makgadikgadi Pans National Park, which stretches away from the riverbank towards its interior of scrubland and mineral-rich grasslands.*



CAMP LAYOUT



## THE CAMP

### FACILITIES

<b>ROOMS</b>	11 Luxurious thatched and glass-fronted chalets and 1 Family suite (consisting of 2 bedrooms with en-suite bathrooms) accommodating a maximum of 24 guests.
<b>PILOT/GUIDE</b>	1 x Pilot/Guide Room (not same standard as guest rooms).
<b>RATES</b>	Fully inclusive of all meals, scheduled safari activities, local drinks (including alcoholic drinks, excluding premium brands) and park entrance fees.
<b>DINING</b>	Dinner is served at one of the dining locations.
<b>CAMP FIRE</b>	Situated near the boma, on the Boteti River Valley cliffs.
<b>SWIMMING POOL</b>	Overlooking the Boteti River Valley.
<b>CAMP HIDE</b>	Hidden hide, below the lodge at water level with the Boteti River offering panoramic views over the Makgadikgadi Pans National Park, ideal for viewing wildlife on the rivers edge.
<b>BAR</b>	Fully stocked bar.
<b>CURIO SHOP</b>	Accepts cash and credit card payments.
<b>LAUNDRY</b>	Daily, inclusive laundry service available.
<b>WATER</b>	Reverse osmosis water treatment plant supplies drinking water (bottled water on request).
<b>ELECTRICITY</b>	Operates on AC 220V generator power which is available during the day and evening. The generator is switched off at night and inverted 12-volt DC lighting provides room and bathroom illumination overnight.
<b>WI-FI</b>	Connection to Wi-Fi is available in the rooms only. Wi-Fi is via remote satellite link up and constant connectivity is not guaranteed.
<b>TELEPHONE</b>	No telephone communication available. The lodge has a satellite phone and radio for emergencies.
<b>CHILDREN</b>	Children from 6 years and older. See Desert & Delta Safaris child policy for more information.

 [CAMP IMAGES](#)





## ACCOMMODATION

The lodge features twelve luxurious thatched and glass-fronted chalets with en-suite bathrooms, each unit raised on a wooden platform. With their prime location facing east and on the edge of the Boteti River, each guest room offers exceptional views across the Boteti River below and into the Makgadikgadi Pans National Park.

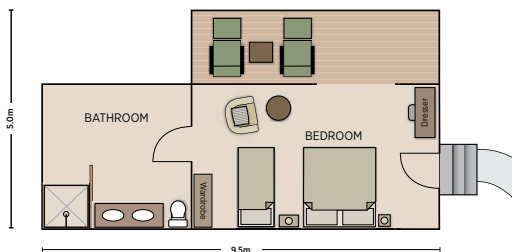


 CAMP IMAGES

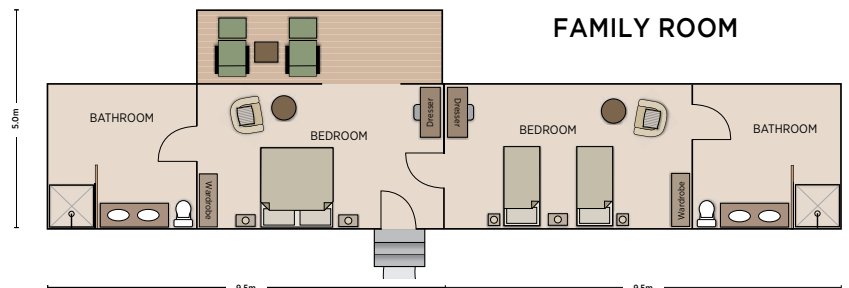
 PLANS

### ROOM FACILITIES

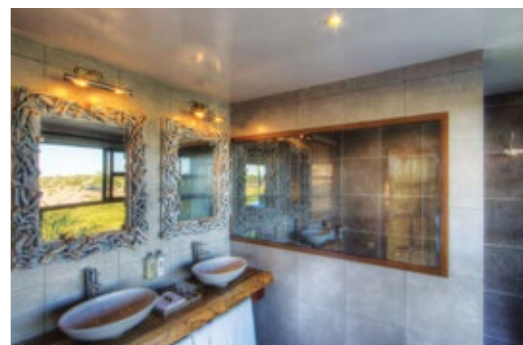
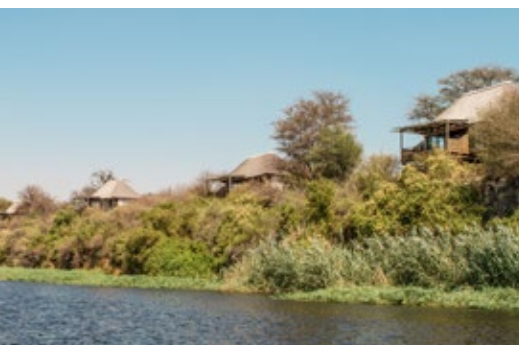
<b>RAISED DECKS</b>	Luxurious thatched and glass fronted chalets on raised wooden platforms.
<b>PRIVATE VIEWING DECK</b>	Each chalet is raised on the high banks of the Boteti river with 270° panoramic views.
<b>EN-SUITE BATHROOM</b>	En-suite showers, hand basin and toilet facilities.
<b>FANS</b>	Fans are available in all rooms - there is no air-conditioning in the rooms.
<b>POWER</b>	220V multi adaptor plugs for charging photographic equipment.
<b>SAFE</b>	A small pass-code protected safe for storing valuables.
<b>FLASHLIGHT</b>	For use in the rooms at night.
<b>UMBRELLA</b>	In case of rain.
<b>AIR HORN</b>	For use in case of an emergency.
<b>HAIRDRYER</b>	A small hairdryer is available in each room.
<b>BATHROOM AMENITIES</b>	A range of bathroom amenities including bio-degradable soaps, shower gels etc.
<b>TEA &amp; COFFEE FACILITIES</b>	A small kettle with tea and coffee available.



STANDARD ROOM






FAMILY ROOM





## ACTIVITIES

Translated as 'lion's paw', Leroo La Tau and its surrounds features abundant wildlife including lion, jackal, caracal, porcupine as well as good populations of general game species such as zebra, wildebeest, giraffe, kudu and impala. The Boteti River plays a vital role in the annual zebra migration making Leroo La Tau the ideal place from which to witness Africa's second largest migration of zebra and wildebeest.

	<b>GAME DRIVES</b>	Morning and afternoon game drives conducted in the Makgadikgadi Pans National Park.
	<b>MOTORISED BOAT SAFARIS</b>	Depending on water levels, boating safaris are offered on the Boteti River. The boats are equipped with comfortable seats, a foldaway canvas roof and life jackets.
	<b>CULTURAL EXCURSIONS</b>	For guests interested in cultural interactions and experiencing daily life in a Botswana community, excursions to the nearby Khumaga Village can be arranged.
<b>ADDITIONAL ACTIVITIES</b>		Makgadikgadi Pans Sleep Out
<i>Optional Extra, Surcharges apply (no surcharge on 3 night stays).</i>		Nxai Pan Day Trips

PLEASE NOTE: Owing to their remote location within the Makgadikgadi Pans National Park, the Makgadikgadi Pans themselves are not visited on daily scheduled activities from Leroo La Tau.

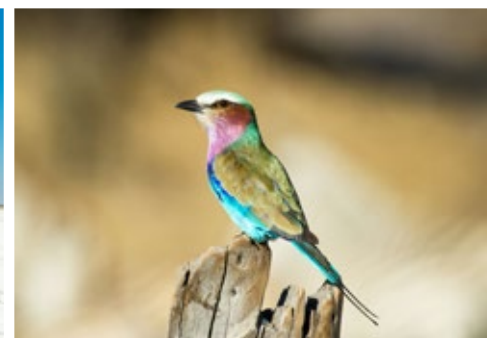
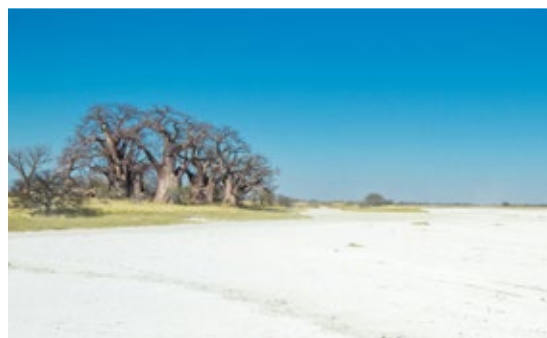
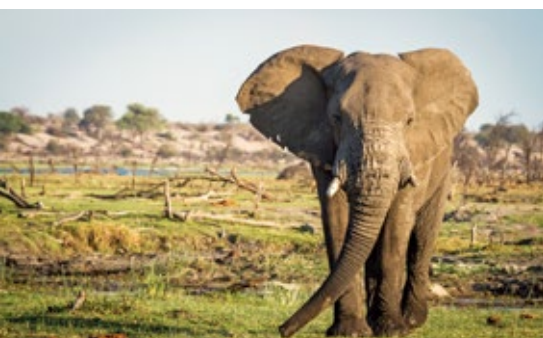
 EXPERIENCE IMAGES



## TYPICAL DAY ON SAFARI

Please note the below suggested daily program is flexible based on the guests interests, travel times and availability of activities.

WINTER TIMES	SUMMER TIMES	ACTIVITY
05:30	05:00	Early morning wake-up call.
06:00	05:30	Light continental breakfast served in the dining area.
06:30	06:00	Leave for morning activity, (approximately 3 - 4 hours).
11:30	11:00	Brunch is served at the dining area.
SIESTA TIME		Relax and enjoy the lodge facilities and surroundings.
15:00	15:30	Afternoon tea is served on the open air patio.
15:30	16:00	Depart for afternoon activity (approximately 3 hours).
18:30	19:00	Arrive back at the lodge.
19:30	20:00	Dinner is served at on of the dining locations.





## ACCESS TO LEROO LA TAU

Leroo La Tau is accessed by light aircraft transfer or 140km drive from Maun. The road from Maun is tarred however the last stretch is a sandy road suitable for 4x4 vehicles only. The airstrip is owned by Desert and Delta Safaris, a Chobe Holdings Company. Flights to and from Leroo La Tau are scheduled based on the travellers itinerary. Once at the airstrip, it is a road transfer of approximately 30 minutes to camp.

### AIRSTRIP DETAILS

STRIP GPS CO-ORDINATES	S20° 25' 53.83 E024° 27' 30.45
CAMP GPS CO-ORDINATES	S20° 25' 13.74 E024° 31' 18.78
LENGTH	1000m
LICENSE	CAAB licensed Class B airstrip and can accommodate aircrafts up to 5000kg's (Cessna Caravan).
PRIVATE CHARTERS	Prior consent from Desert & Delta Safaris is required before landing private aircraft on the airstrip.

Maun

### ESTIMATED FLIGHT TIMES Between Camps & Airports

25	Camp Okavango				
30	5	Xugana Island Lodge			
20	10	10	Camp Moremi / Camp Xakanaxa		
40	30	25	25	Savute Safari Lodge	
30	45	45	40	50	Leroo La Tau
70	60	60	55	30	65 Kasane

PLEASE NOTE: Drone use is strictly prohibited at Leroo La Tau and inside the Makgadikgadi Pans National Park, in accordance with National Park laws of Botswana.



Empowering Botswana Through Tourism

#### RESERVATIONS OFFICE

TELEPHONE [+267] 680 1494  
E-MAIL [info@desertdelta.com](mailto:info@desertdelta.com)

View Desert & Delta Safaris Video

#### MARKETING OFFICE

TELEPHONE [+267] 686 1559  
E-MAIL [marketing@desertdelta.com](mailto:marketing@desertdelta.com)  
ADDRESS Private Bag 310,  
Maun, Botswana

[www.desertdelta.com](http://www.desertdelta.com)